

# LOWER BASEMENT



- DEPARTMENT STORE
- FOOTWEAR
- FASHION
- HANDBAGS / LUGGAGE
- JEWELLERY / WATCHES / ACCESSORIES
- SERVICES / SPECIALTY STORES
- PERFUME & COSMETICS
- HOME FURNISHING
- ENTERTAINMENT
- ELECTRONICS
- MOBILES & ACCESSORIES
- F&B - RESTAURANT / CAFE
- F&B - QUICK SERVICE / IMPULSE
- SUPERMARKET
- SPORTS / OUTDOORS
- TOYS / HOBBIES / GIFTS / MUSIC / BOOKS / STATIONERY

Shop No.	Area (sq m)
P-G02-05-13	81.9
P-G02-05-14	54.2
P-G02-05-15	77.2
<b>Total Shops at Zone 05</b>	<b>113</b>
<b>Total Shops At Ground/G2 Floor</b>	<b>24</b>



- LEGEND:**
- Vacant
  - Reserved
  - Under Fitout
  - Renovation
  - Open for Business
  - Legal

PHOT Report Summary as Civil Defense Permit

Open For Business	Under Fitout	Vacant Shops	Total Shops
01	01	13	15



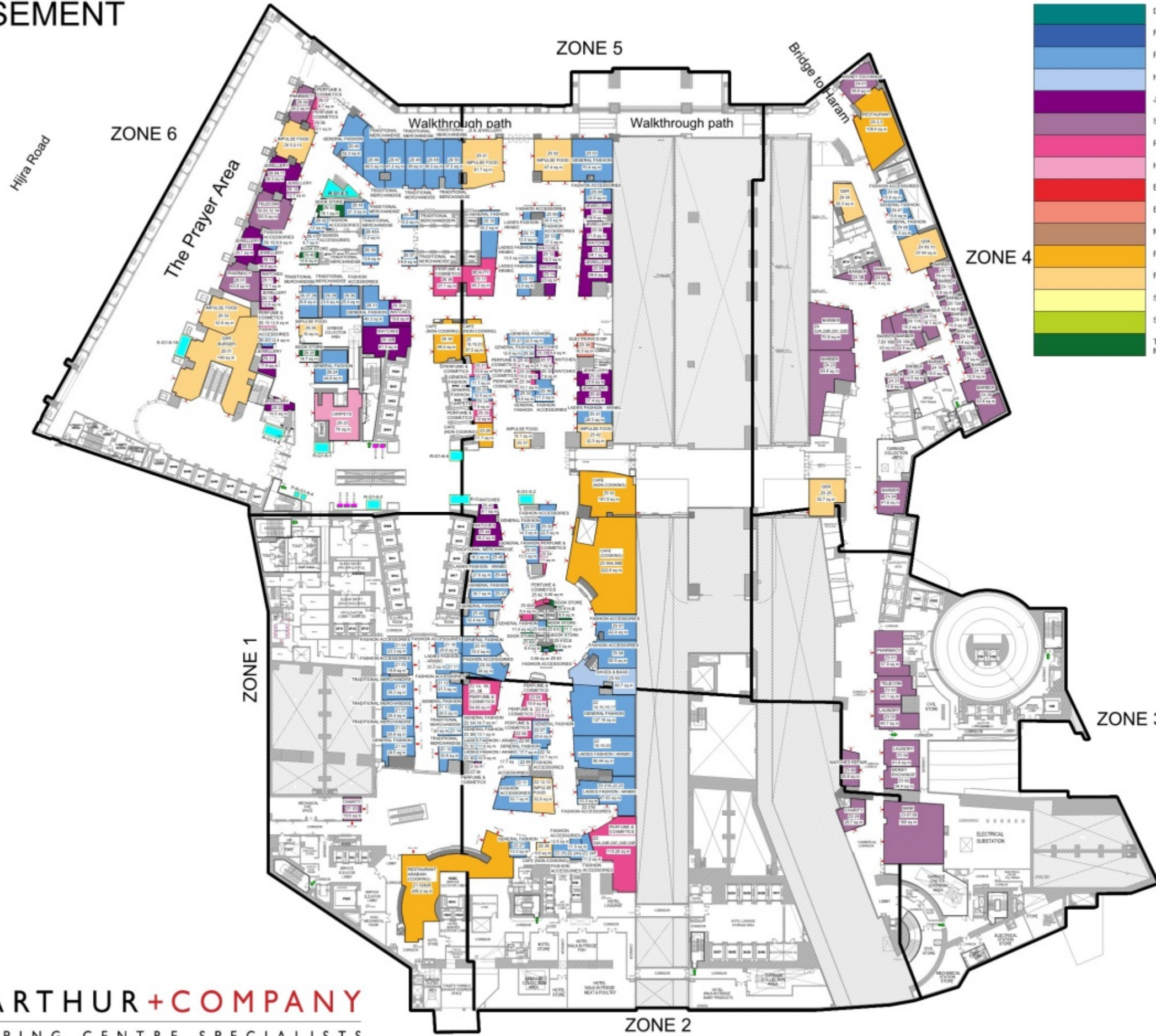
Scale: A8 to paper  
 Designed by: Mohamed Osama  
 Checked by: Mohamed Osama  
 Approved by: \_\_\_\_\_

**DRAWING TITLE:** PODIUM SECOND GROUND PLAN

**Sheet No.:** Base Plan



# BASEMENT



[Green]	DEPARTMENT STORE
[Blue]	FOOTWEAR
[Light Blue]	FASHION
[Light Blue]	HANDBAGS / LUGGAGE
[Purple]	JEWELLERY / WATCHES / ACCESSORIES
[Purple]	SERVICES / SPECIALTY STORES
[Pink]	PERFUME & COSMETICS
[Pink]	HOME FURNISHING
[Red]	ENTERTAINMENT
[Red]	ELECTRONICS
[Orange]	MOBILES & ACCESSORIES
[Orange]	F&B - RESTAURANT / CAFE
[Orange]	F&B - QUICK SERVICE / IMPULSE
[Yellow]	SUPERMARKET
[Yellow]	SPORTS / OUTDOORS
[Green]	TOYS / HOBBIES / GIFTS / MUSIC / BOOKS / STATIONERY



## TENANT ACTIVITIES

### LEGEND:-

- [Blue Box] Line Shop
- [Green Box] Coffee Shop
- [Orange Box] Restaurant
- [Red Box] Food Outlets
- [Dark Blue Box] Supermarket
- [Light Orange Box] Anchor
- [Pink Box] Storage

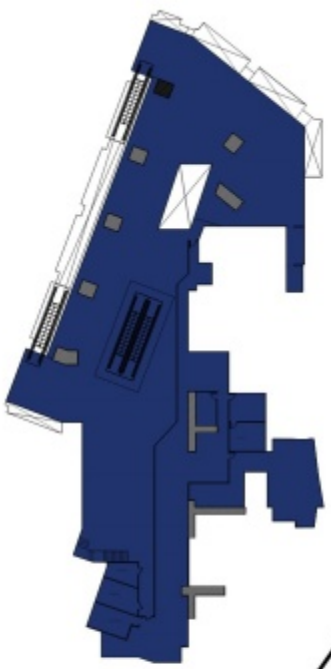
- [001] SHOP NUMBER
- [Blue Circle] Kiosk
- [Green Arrow] FIRE EXIT STAIRCASE-ENTRY
- [Red Arrow] SHOP ENTRY / EXIT



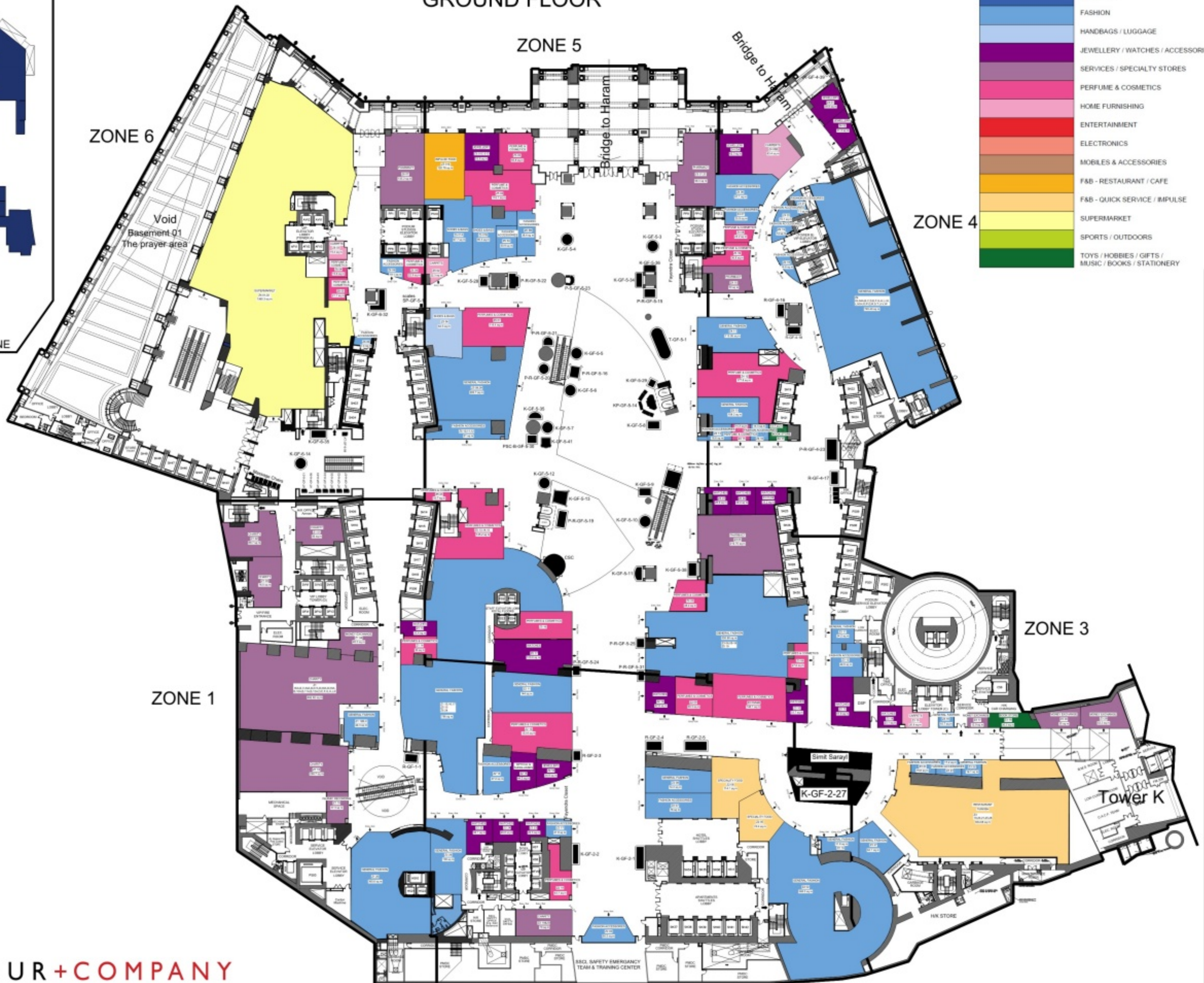


PROJECT : DEVELOPMENT OF KING ABDUL-AZIZ ENDOWMENT

# GROUND FLOOR



P-GF-6-01&02 MEZZANINE



DEPARTMENT STORE
FOOTWEAR
FASHION
HANDBAGS / LUGGAGE
JEWELLERY / WATCHES / ACCESSORIES
SERVICES / SPECIALTY STORES
PERFUME & COSMETICS
HOME FURNISHING
ENTERTAINMENT
ELECTRONICS
MOBILES & ACCESSORIES
F&B - RESTAURANT / CAFE
F&B - QUICK SERVICE / IMPULSE
SUPERMARKET
SPORTS / OUTDOORS
TOYS / HOBBIES / GIFTS / MUSIC / BOOKS / STATIONERY

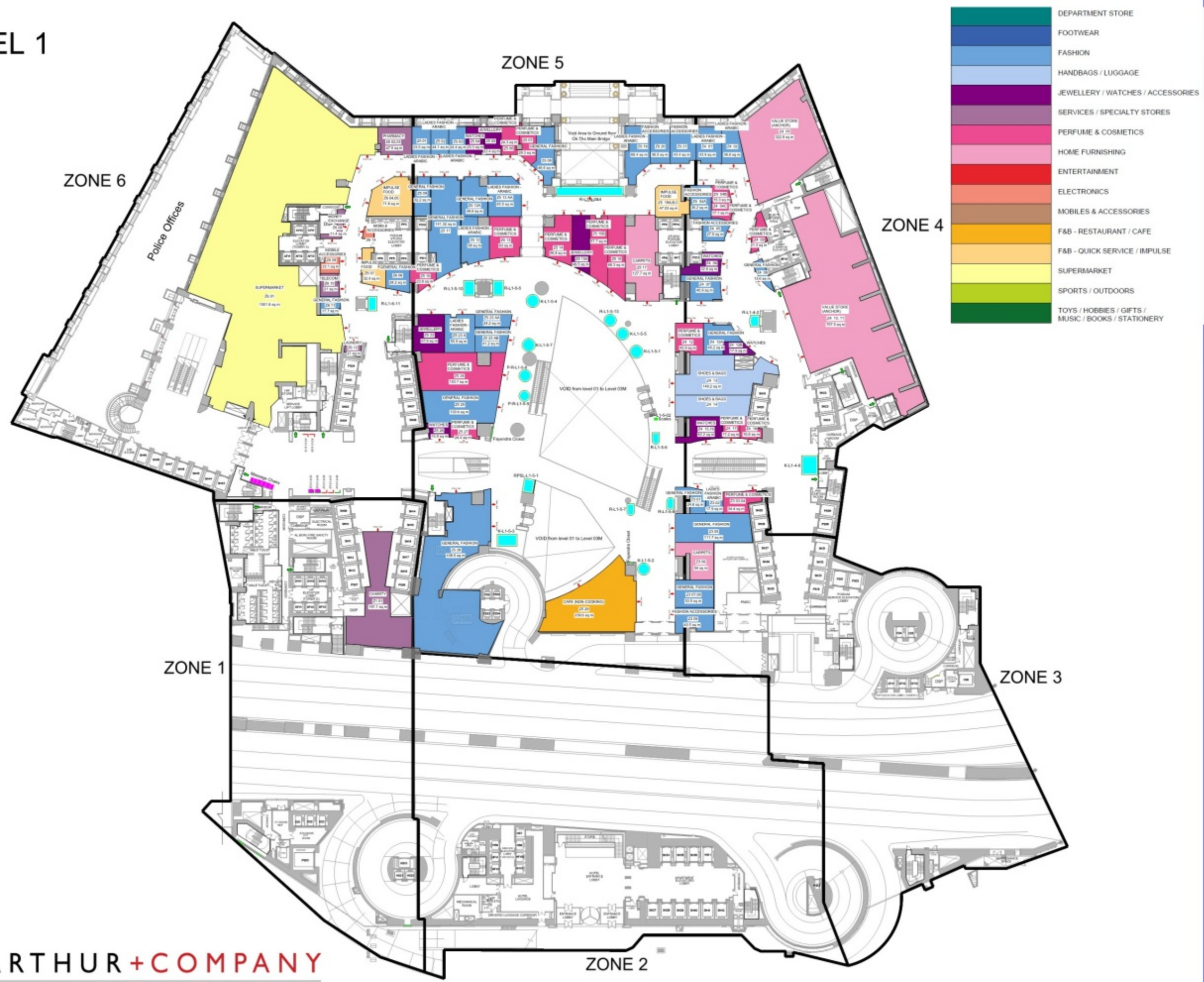
## TENANT ACTIVITIES

LEGEND:-

- Line Shop
  - Coffee Shop
  - Restaurant
  - Food Outlets
  - Supermarket
  - Anchor
  - Storage
- 001 SHOP NUMBER
  - Kiosk
  - FIRE EXIT STAIRCASE - ENTRY
  - SHOP ENTRY / EXIT
  - Digital Scale
  - MASSAGE CHAIRS
  - ATM



# LEVEL 1



- DEPARTMENT STORE
- FOOTWEAR
- FASHION
- HANDBAGS / LUGGAGE
- JEWELLERY / WATCHES / ACCESSORIES
- SERVICES / SPECIALTY STORES
- PERFUME & COSMETICS
- HOME FURNISHING
- ENTERTAINMENT
- ELECTRONICS
- MOBILES & ACCESSORIES
- F&B - RESTAURANT / CAFE
- F&B - QUICK SERVICE / IMPULSE
- SUPERMARKET
- SPORTS / OUTDOORS
- TOYS / HOBBIES / GIFTS / MUSIC / BOOKS / STATIONERY

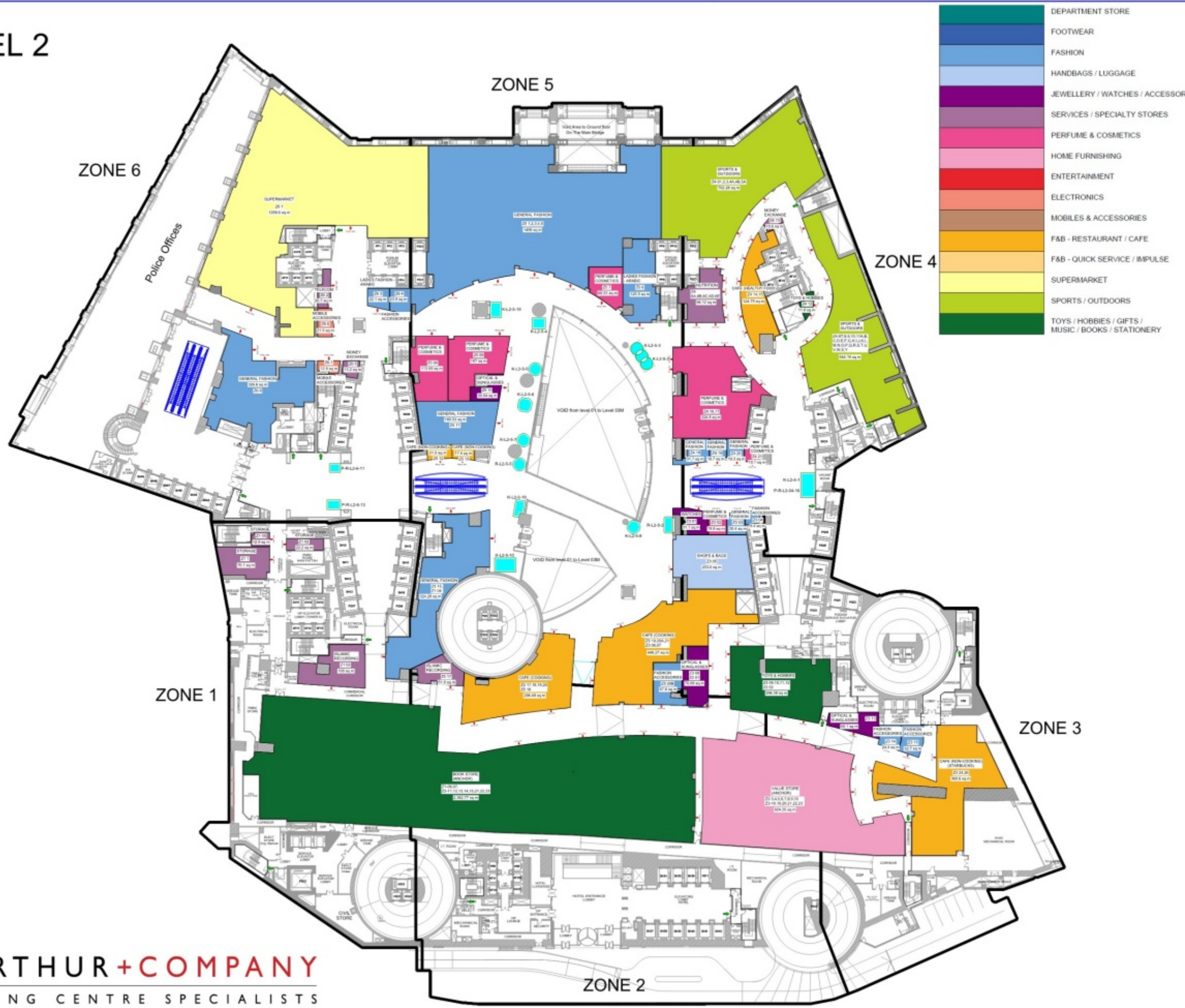
## TENANT ACTIVITIES

### LEGEND:-

- Line Shop
  - Coffee Shop
  - Restaurant
  - Food Outlets
  - Supermarket
  - Anchor
  - Storage
- 001 SHOP NUMBER
  - Kiosk
  - FIRE EXIT STAIRCASE - ENTRY
  - SHOP ENTRY / EXIT
  - Digital Scale
  - MESSAGE CHAIRS
  - ATM



# LEVEL 2



- DEPARTMENT STORE
- FOOTWEAR
- FASHION
- HANDBAGS / LUGGAGE
- JEWELLERY / WATCHES / ACCESSORIES
- SERVICES / SPECIALTY STORES
- PERFUME & COSMETICS
- HOME FURNISHING
- ENTERTAINMENT
- ELECTRONICS
- MOBILES & ACCESSORIES
- F&B - RESTAURANT / CAFE
- F&B - QUICK SERVICE / IMPULSE
- SUPERMARKET
- SPORTS / OUTDOORS
- TOYS / HOBBIES / GIFTS / MUSIC / BOOKS / STATIONERY

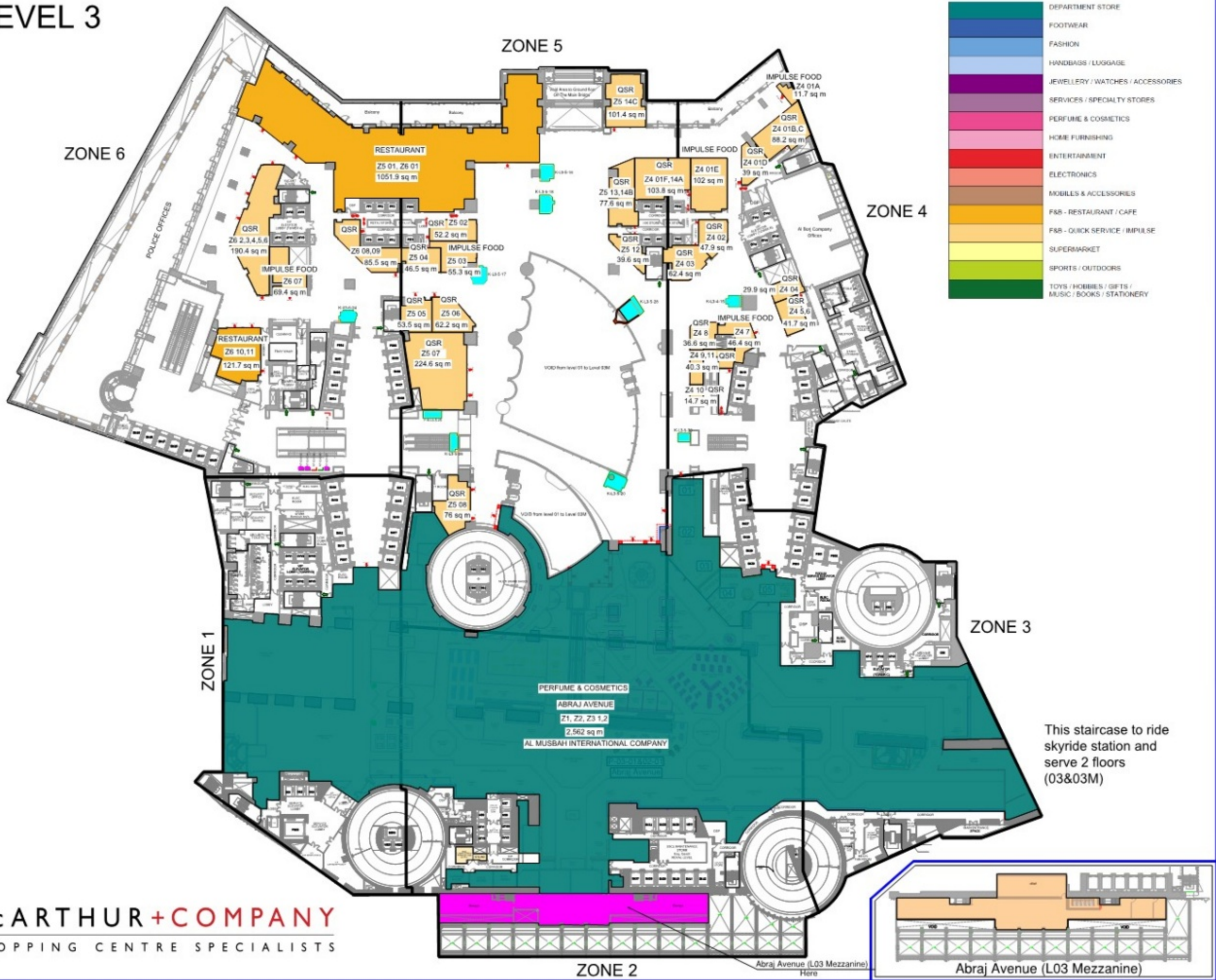


## TENANT ACTIVITIES

- LEGEND:-**
- Line Shop
  - Coffee Shop
  - Restaurant
  - Food Outlets
  - Supermarket
  - Anchor
  - Storage
- 001 SHOP NUMBER
  - Kiosk
  - ➔ FIRE EXIT STAIRCASE - ENTRY
  - ➔ SHOP ENTRY / EXIT
  - Digital Scale
  - ▲ MESSAGE CHAIRS
  - | ATM



# LEVEL 3



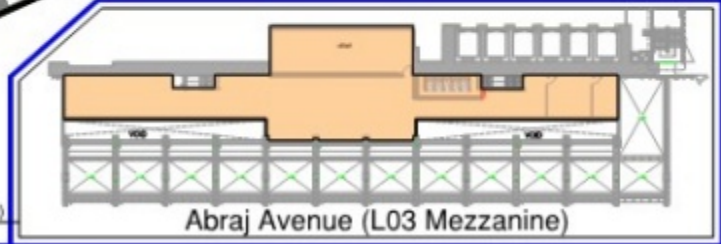
- DEPARTMENT STORE
- FOOTWEAR
- FASHION
- HANDBAGS / LUGGAGE
- JEWELLERY / WATCHES / ACCESSORIES
- SERVICES / SPECIALTY STORES
- PERFUME & COSMETICS
- HOME FURNISHING
- ENTERTAINMENT
- ELECTRONICS
- MOBILES & ACCESSORIES
- F&B - RESTAURANT / CAFE
- F&B - QUICK SERVICE / IMPULSE
- SUPERMARKET
- SPORTS / OUTDOORS
- TOYS / HOBBIES / GIFTS / MUSIC / BOOKS / STATIONERY

### TENANT ACTIVITIES

#### LEGEND:-

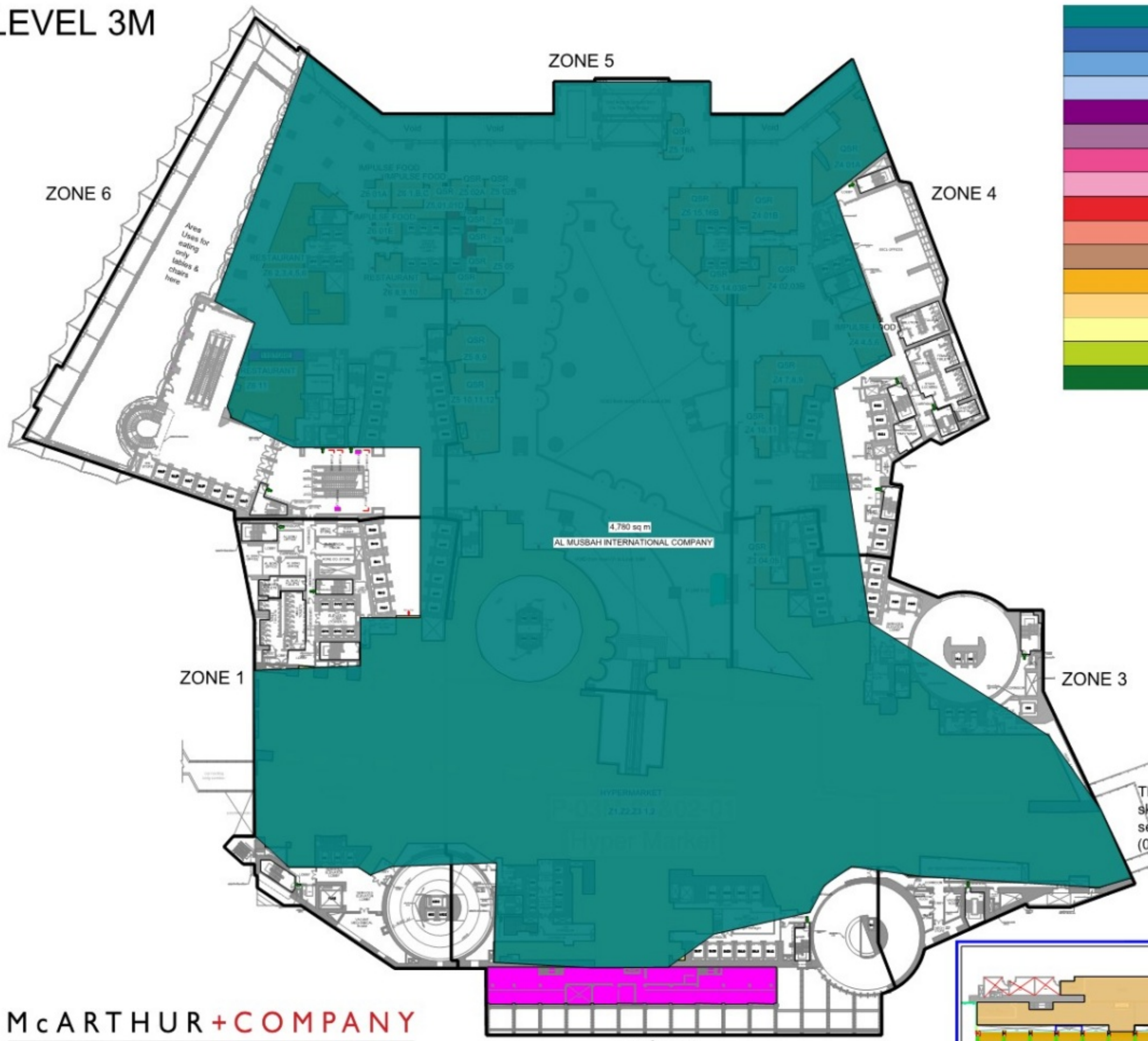
- Line Shop
- Coffee Shop
- Restaurant
- Food Outlets
- Supermarket
- Anchor
- Storage
- SHOP NUMBER
- Kiosk
- FIRE EXIT STAIRCASE - ENTRY
- SHOP ENTRY / EXIT
- ATM

This staircase to ride skyride station and serve 2 floors (03&03M)





# LEVEL 3M



- DEPARTMENT STORE
- FOOTWEAR
- FASHION
- HANDBAGS / LUGGAGE
- JEWELLERY / WATCHES / ACCESSORIES
- SERVICES / SPECIALTY STORES
- PERFUME & COSMETICS
- HOME FURNISHING
- ENTERTAINMENT
- ELECTRONICS
- MOBILES & ACCESSORIES
- F&B - RESTAURANT / CAFE
- F&B - QUICK SERVICE / IMPULSE
- SUPERMARKET
- SPORTS / OUTDOORS
- TOYS / HOBBIES / GIFTS / MUSIC / BOOKS / STATIONERY



PROJECT : DEVELOPMENT OF KING ABDUL-AZIZ ENDOWMENT

## TENANT ACTIVITIES

### LEGEND:-

- Line Shop
- Coffee Shop
- Restaurant
- Food Outlets
- Supermarket
- Anchor
- Storage
- SHOP NUMBER
- Kiosk
- FIRE EXIT STAIRCASE - ENTRY
- SHOP ENTRY / EXIT
- ATM

